

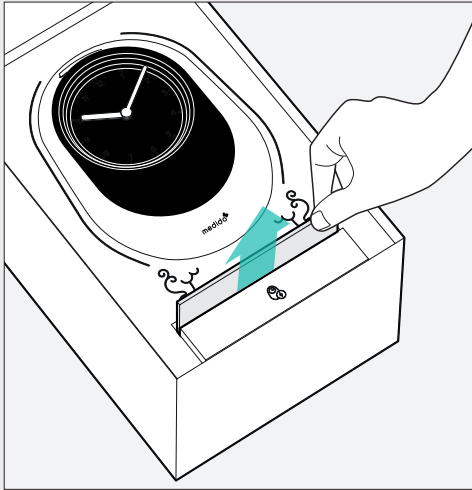
Startguide

Start using Medido Medication Clock

 www.medido.com

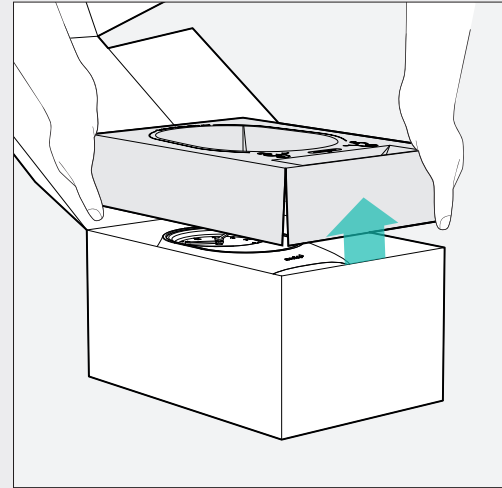
1

Unboxing Medido



In the Medido box you will find the manual above the accessories box.

In the accessories box you will find the adapter, stickers and the emergency key.



Remove the Medido from the box by removing the cardboard layer.

Remove the plastic bag the Medido is packed in and place the Medido on the chosen spot.

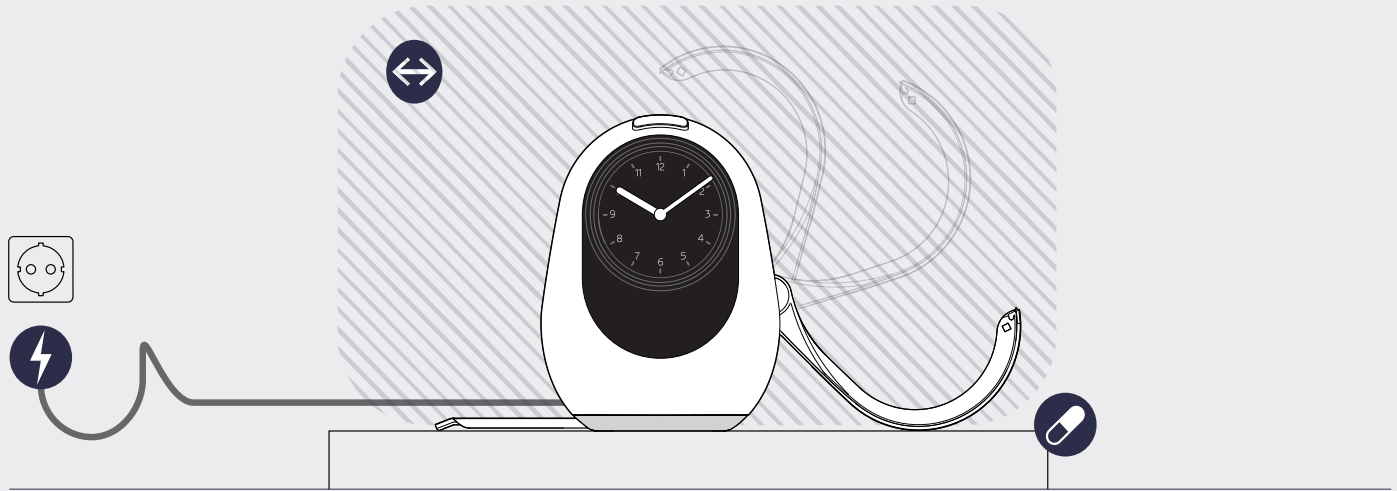
If possible store the box.



Attention: read the manual carefully before using the Medido Medication Clock.

2

Choosing a suitable place for Medido



Power source

Make sure Medido is placed near a power source and nobody can trip or fall over the power cable.

Space

Make sure Medido is placed in an area with enough space to ensure that the lid can be opened and the tray can be extended.

In use

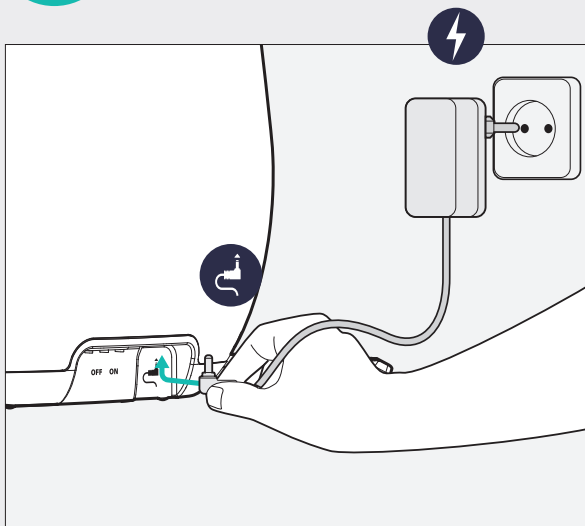
Make sure Medido is placed in an area that is easily accessible and visible for the client.



Attention: do not place Medido near a heat source or in direct sunlight and keep out of reach of children and pets.

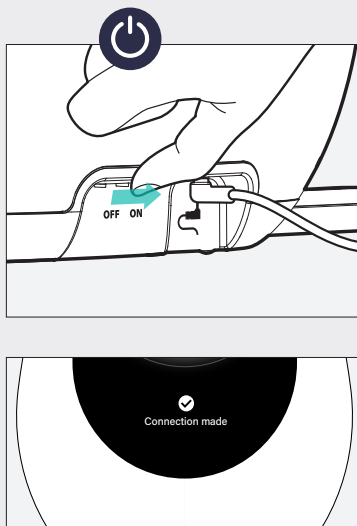
3

Plug in Medido



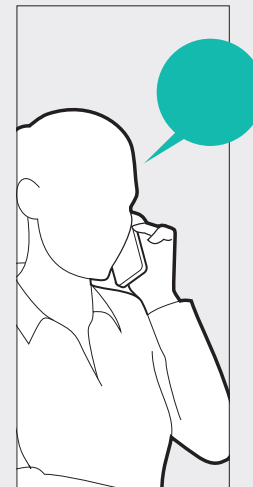
Plug the adapter into the adapter port at the back of Medido beside the on- off switch.

The other side of the adapter can now be plugged into the nearest power source.



Medido can be turned on by moving the on-off switch to the right, into the on position.

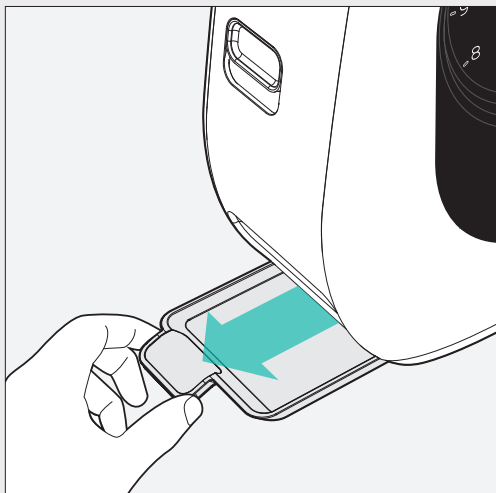
Medido will start connecting. The button and the display will indicate when the connection has been made.



Load the medication schedule and discuss the settings of Medido with healthcare professionals.

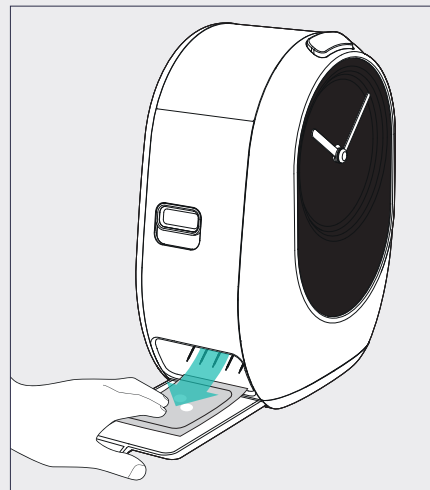
4

Extend the tray



Medication is dispensed from the left side of the dispenser.

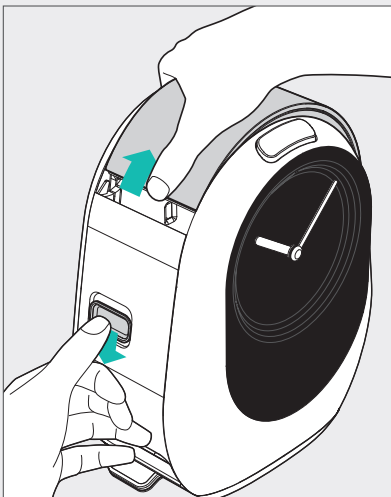
It is important to fully extend the tray to ensure the medication will fall on the tray when dispensed.



The medication pouch will fall onto the tray. This may be multiple pouches depending on the schedule.

5

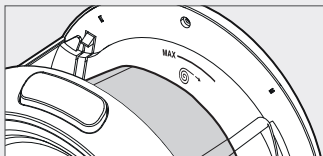
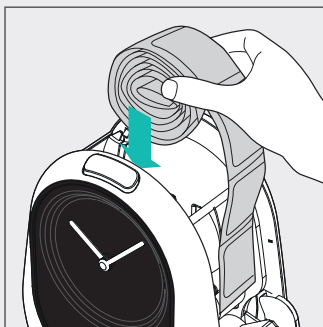
Loading the medication roll



Opening Medido

On the left side of Medido is a slider. Push this slider down to open the dispenser.

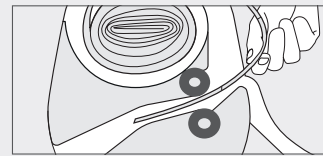
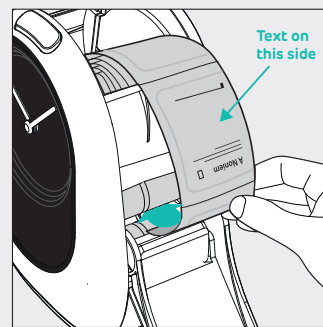
You can now place the medication roll in the reservoir.



Placing the roll

Place the roll in the reservoir, make sure the end of the roll is placed over the edge, on the righthand, side of the dispenser.

Ensure the roll does not exceed the maximum size indication.

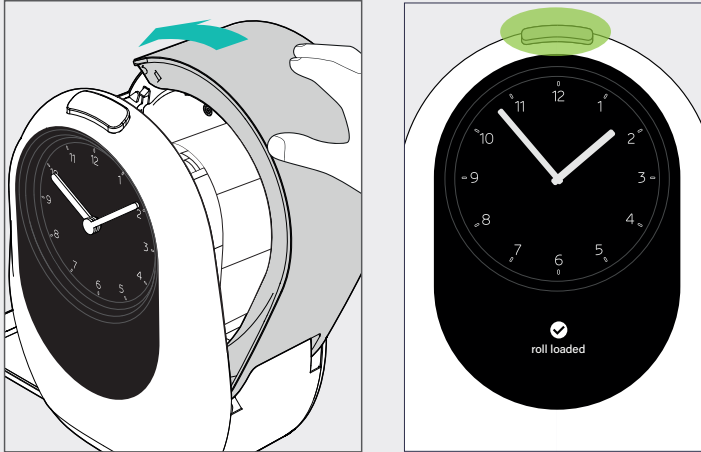


Loading the pouches

Take the first pouch of the roll, pull this up slightly and push the first pouch between the transportrollers with the print visible on the outside.

6

Closing Medido

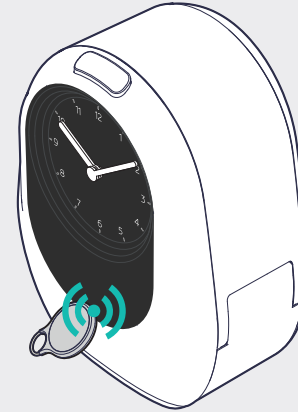


Closing the lid

Close the lid. The roll will automatically be loaded. The display will indicate if the roll has been loaded successfully and the button will light up green.

7

Locking Medido



RFID-Tag

To lock Medido connect a RFID-tag to the dispenser. To do this contact a healthcare professional.

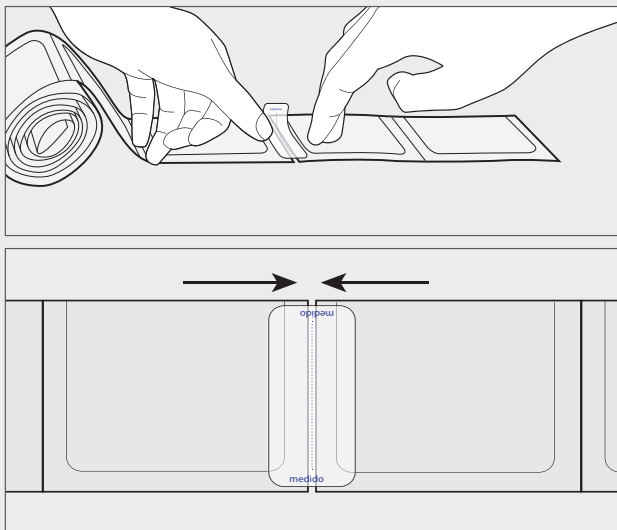
To lock and unlock Medido hold the tag in front of the Medido logo. A lock symbol on the display will indicate the lock status.



Loading failed? Try loading again following the instructions or contact a healthcare professional.

8

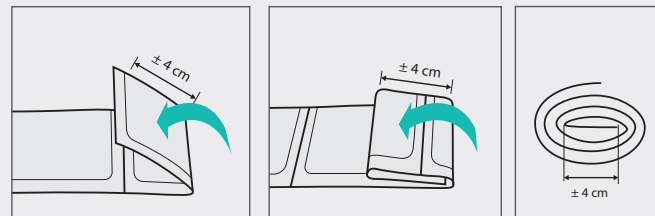
Combining medication rolls



It is recommended to attach a new medication roll to the current roll when there are two pouches left.

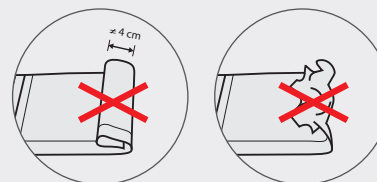
Attach the new roll to the current roll using the stickers provided.

Remove the empty pouches at the start of the roll. Check if the first medication time is correct according to the medication schedule. You do not need to remove the empty pouch at the end of the new roll.



It is important that the pouches are rolled correctly.

Roll up the pouches neatly with the print on the outside. Ensure that the first fold is about 4 cm. Continue folding until all the pouches are folded into a roll.



Attention: prevent rolling up the pouches incorrectly by ensuring the correct size of the first fold and making sure the pouches are not crumpled.

9

Using Medido



Upcoming moment

It is possible to view upcoming medication moments that are in the schedule.

To do so, press the button on top of Medido, when it is white.

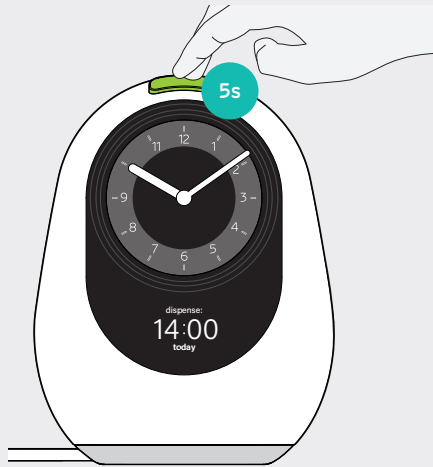
By repeatedly pressing the button on top of the dispenser the next scheduled moment will appear one by one on the display.

Time for medication

As soon as the button starts to turn blue and the clock dial starts to light up, the medication is ready to be dispensed. Medido will sound when it's officially time to dispense the medication.

Medication can be dispensed by pressing the button on top of the dispenser.

The medication pouch will fall onto the tray when dispensed. Multiple pouches may be dispensed depending on the schedule. To be able to open the pouch easily the pouch is pre-cut.



Pre-dispense

Medication moments can also be dispensed before it is officially time or the button has turned blue.

Hold the button whilst white until the button turns green. The medication will now be dispensed and you can let go of the button.



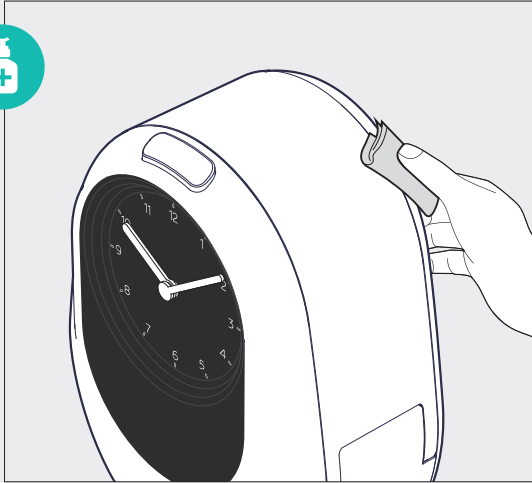
Forgotten medication

Medido's button turns red when a medication moment has been missed. However, as long as the medication can be taken the medication time will remain on the display. The medication can be dispensed by pressing the red button.

Always discuss with a healthcare professional if the forgotten medication can still be taken.

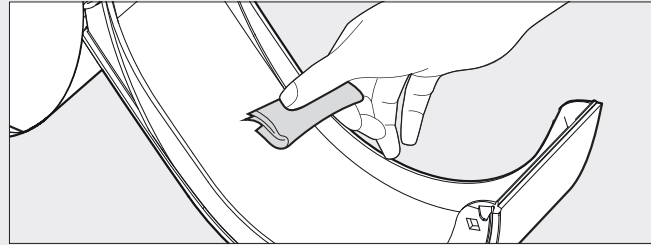
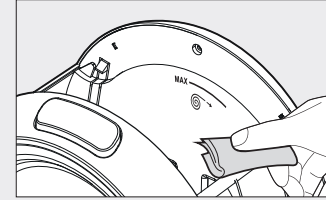
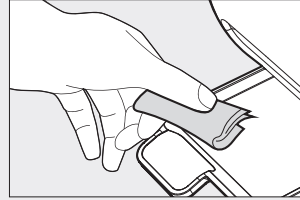
10

Cleaning and disinfecting



Clean your Medido regularly and disinfect when needed.

Medido can be cleaned with a damp cloth or a cloth with disinfectant. Dry Medido with a clean teatowel.



The exterior, tray, reservoir and the inside of the lid can be cleaned as illustrated above.



Starting

Open the camera app on your smartphone.

Scan

Aim the camera on the QR-code.
Click on the suggested webpage.

View

The QR-code leads you to the website 'www.medido.com' where you will find the instruction video's for the Medido Medication Clock.



Attention: if you have a smartphone from before 2018 or a lower system than Android 9.0, Download the app 'Google lens' trough Google play.

12

Symbols on the display



Medication moment

This symbol is visible on the display when it is time to dispense the medication.



Please wait

The dispenser is processing an action.



Upcoming medication moments

These symbols are visible when the button is pressed briefly to see the next upcoming medication moments. The number will increase when the button is pressed to indicate the first, second and third upcoming medication moment.



Battery indication

When the dispenser is not plugged into a power source, the dispenser will use the back up battery. This symbol indicates how full the battery is.



Lock closed

When the lock has been closed successfully, this symbol is visible on the display.



Lock opened

When the lock has been opened successfully, this symbol is visible on the display.



Connection lost

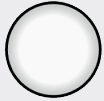
The dispenser has lost connection to the network.



Attention: these are not all the symbols the Medication Clock will show. You can find all the symbols in the Medication Clock manual.

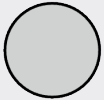
13

Button colours



Neutral

There is no action for the Medido right now. The Medido is waiting for the next action. The button can blink white, this indicates that the lid needs to be closed or the Medido is dispensing medication.



Dispenser is off or in night mode

The button can only be grey during night mode or when the dispenser has been turned off.



Soft medication signal

Half an hour before the planned medication time the the button and the ring behind the clock will start to light up blue. As soon as the button starts to turn blue it is possible to dispense the medication by pressing the button.



Dispense moment

It is time for medication when the signal sounds, the button is fully blue and the ring is lit up. Press the button to receive the medication.



Forgotten medication

The medication time has passed. The time of the forgotten medication will appear on the display. The forgotten medication can still be dispensed by the dispenser. Press the red button. Always consult with a healthcare professional before taking the forgotten medication.



Attention is necessary

Attention is necessary to continue using the Medido. Follow the instructions on the display.



Action is succesful

When the button lights up green, the action has been successful. This will also appear on the display.

